



# DOOR SYSTEMS

**ALUK**<sup>®</sup>

# DOOR SYSTEMS

AluK provides a complete range of aluminium door systems to suit the needs of any project, commercial or residential, providing the flexibility, style, security and performance that designers are looking for when specifying glazing and entrance solutions. Manufactured to the highest standards using aluminium our doors are inherently strong, lightweight and sustainable.

Our unique profiles have been designed to meet and exceed the performance standards expected in modern building design, whilst also providing the aesthetic appeal designers are looking for. A range of design features and functions enable specifiers to choose the product that suits the needs and design of their project, whilst being assured of the quality and performance that is integral to all our innovative building systems.

Safe and very secure, AluK door systems are certified under the Secured by Design scheme, managed by the UK Association of Chief Police Officers, and include high quality multi-point locking mechanisms and a range of other security features. Combined with the inherent strength of aluminium our doors are some of the most secure available on the market.

Systems are available in a range of standard colours as well as any RAL colour to order. This can be single or dual colour, providing the option to have a different colour inside and out. A wide range of complementary fittings are also available to complete the desired look.

## CONTENTS

Introduction	2-3
72BD door system	4-5
72BD HI door system	6-7
58BD door system	8-9
58BD+ door system	10-11
GT55 TB door system	12-13
GT55 NI door system	14-15





## ➤ 72BD DOOR SYSTEM

72BD is a three chamber aluminium door system that offers high performance and robustness alongside a wide range of adaptable features, formats and configurations to meet the demands of your project.

The 72BD door system is available in a wide range of formats, configurations and styles to provide the perfect solution for your project. Combining high performance with stylish design, this fit-for-purpose door system is tried and tested, exceeding many industry standards for safety and security.

### Design Features

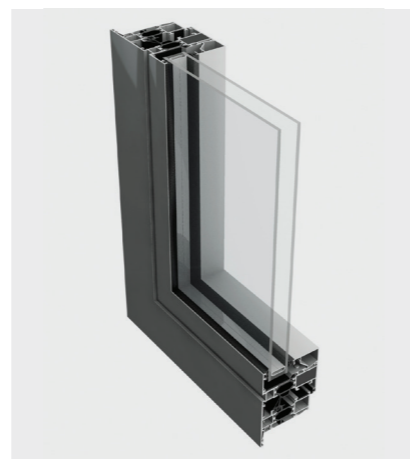
- Three chamber high performance door system
- Both aluminium and PVC groove hardware available
- Certified under Secured by Design scheme
- Tested to PAS 24 and certified under the Secured by Design scheme

### Options

- Doors can be manufactured to suit any configuration, style and design
- Full range of high quality hardware available
- Glazing sizes from 25mm - 65mm
- Wide range of security locking mechanisms to fully customise your door
- Available in single or dual colour option, polyester power coating and anodised finishes

### Configurations

- Single Doors (Open In)
- Single Doors (Open Out)
- Double Doors (Open In)
- Double Doors (Open Out)



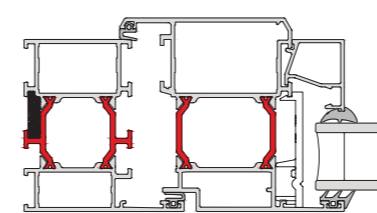
## 72BD Door System Technical Specifications

The 72BD door system is available in a wide range of formats, configurations and styles to provide the perfect solution for your project. Combining high performance with stylish design, this fit for purpose door system is tried and tested, exceeding many industry standards for safety and security. All systems have received 3rd party certification under the BSI Kitemark scheme. Anodised finishes are also available with marine grade guarantees on request.

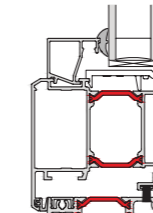
72BD SINGLE & DOUBLE DOOR	
<b>PERFORMANCE &amp; ACCREDITATION</b>	
U-value (Double Glazing)*	1.7 W/m²K
U-value (Triple Glazing)**	1.3 W/m²K
Green Guide Rating	B Rated
Acoustic Performance (dB)	Rw (C;Ctr) 35 (-2;-5) dB
Air Tightness (Pa)	Class 4
Water Tightness (Pa)	Class E750
Wind Load (Pa)	Class 4
Security	npd
Secured By Design	No
<b>CONFIGURATIONS</b>	
Opening	Open In & Open Out
<b>SIZE LIMITS</b>	
Max Vent Weight	100 Kg
<b>SYSTEM FEATURES</b>	
Frame Options	72mm
Dual Colour Option	●
Multi-Point Locking	●
Glazing Options	Internal
Glazing Thickness	13mm - 57mm

### CAD cross sections and thermal profile

Open In - JAM B



Open In Cill



\* Further details regarding profile Uf figures are available on request from AluK. \*\* Uf-Values based on 0.7 W/m²K triple glazing with warm edge Swisspacer V bar. Sound insulation values are Rw reduction values and are based on tests using acoustic glazing.

Please visit [www.aluk.co.uk](http://www.aluk.co.uk) to download all BIM components and CAD files.



## ➤ 72BD HI DOOR SYSTEM

This three chamber aluminium door system has been designed to offer the highest levels of performance, coupled with upgraded thermal insulation, alongside the flexibility to tailor configurations to your requirements.

The 72BD HI aluminium door system incorporates our patented Spidertechnology® ABS strips that allow you to achieve high thermal insulation without common expensive system adjustments. The system has been certified under the Secured by Design scheme and incorporates high security multipoint locking systems and a range of door furniture.

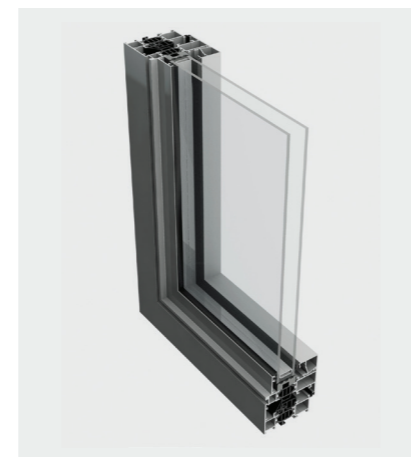
Available in a wide range of configurations, finishes and colours, the system can be adapted and configured to complement the design of your building.

### Design Features

- Three chamber high performance door system
- Both aluminium and PVC groove hardware available
- Certified under the Secured by Design scheme
- Tested to PAS 24 and certified under the Secured by Design scheme

### Options

- EPDM insulation can be inserted to create a multi-chambered 'insulation block' between frame and vent profile and prevent localised convection
- A continuous insulation strip in PE foam can be introduced between the glazing and aluminium profile during glazing to significantly reduce heat loss
- Full range of hardware and security locking mechanisms available
- Glazing sizes of 25mm – 65mm
- Available in single or dual colour options including anodised finishes



### Configurations

- Single Doors (Open In)
- Single Doors (Open Out)
- Double Doors (Open In)
- Double Doors (Open Out)

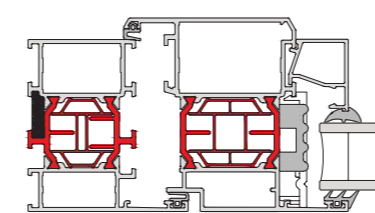
## 72BD HI Door System Technical Specifications

The 72BD HI door system provides complete flexibility alongside the ultimate in performance to meet the needs of the most demanding project. Available in a wide range of configurations, finishes and colours, the system can be adapted and configured to complement the design of your building. All systems have received 3rd party certification under the BSI Kitemark scheme.

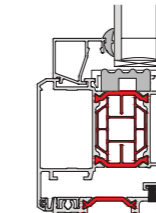
72BD HI SINGLE & DOUBLE DOOR	
<b>PERFORMANCE &amp; ACCREDITATION</b>	
U-value (Double Glazing)*	1.7 W/m²K
U-value (Triple Glazing)**	1.3 W/m²K
Green Guide Rating	B Rated
Acoustic Performance (dB)	Rw (C;Ctr) 35 (-2;-5) dB
Air Tightness (Pa)	Class 4
Water Tightness (Pa)	Class E750
Wind Load (Pa)	Class 4
Security	npd
Secured By Design	No
<b>CONFIGURATIONS</b>	
Opening	Open In & Open Out
<b>SIZE LIMITS</b>	
Max Vent Weight	100 Kg
<b>SYSTEM FEATURES</b>	
Frame Depth	72mm
Dual Colour Option	●
Multi-Point Locking	●
Glazing Options	Internal bead
Glazing Thickness	13mm - 57mm

### CAD cross sections and thermal profile

Open In - JAM B



Open In Cill



\* Further details regarding profile Uf figures are available on request from AluK . \*\* Uf-Values based on 0.7 W/m²K triple glazing with warm edge Swisspacer V bar. Sound insulation values are Rw reduction values and are based on tests using acoustic glazing.

Please visit [www.aluk.co.uk](http://www.aluk.co.uk) to download all BIM components and CAD files.



## ➤ 58BD DOOR SYSTEM

The 58BD door system is the perfect choice for residential or light commercial projects, offering a cost effective, high performance solution in a wide range of configurations and formats to suit your building design. With clean lines and advanced functionality, this superior door system offers the choice and flexibility to meet your needs.

The 58BD door system has been designed to offer a high performance, narrow profile solution that has the range and flexibility to suit most projects, with a complete range of colours and finishes. Certified under the Secured by Design scheme, and meeting all relevant standards, this competitively priced door system offers complete choice and flexibility.



### Design Features

- 58mm or 70mm frame depth to accommodate varying types of applications
- Unique polyamide thermal break design to improve thermal performance
- Tested to PAS 24 and certified under Secured by Design scheme
- Door system with unique Polyamide Euro groove design

### Options

- Available as a standard door option with PAS24 upgrade
- Multi point locking mechanisms for enhanced security
- Accommodates 24mm - 44mm glazing units for thermal and acoustic performance
- Dedicated fixing straps for ease of installation
- Low threshold door option to comply with Part M – Building Regulations
- Available in single or dual colour option, polyester powder coating and anodised finishes
- Integrated deep head profiles for ease of trickle ventilation

### Configurations

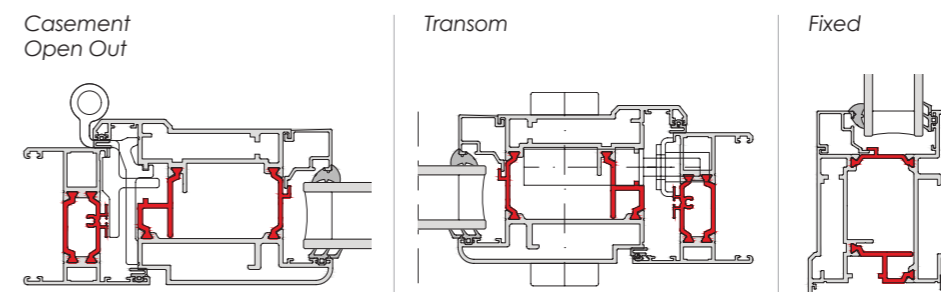
- Single Doors (Open In)
- Single Doors (Open Out)
- Double Doors (Open In)
- Double Doors (Open Out)
- Lifetime Homes (LTH)

## 58BD Door System Technical Specifications

The 58BD door system has been designed to offer a high performance, narrow profile solution that has the range and flexibility to suit most projects. Anodised finishes are also available with marine grade guarantees on request. Certified under the Secured by Design scheme, and meeting all relevant standards, this competitively priced door system offers complete choice and flexibility.

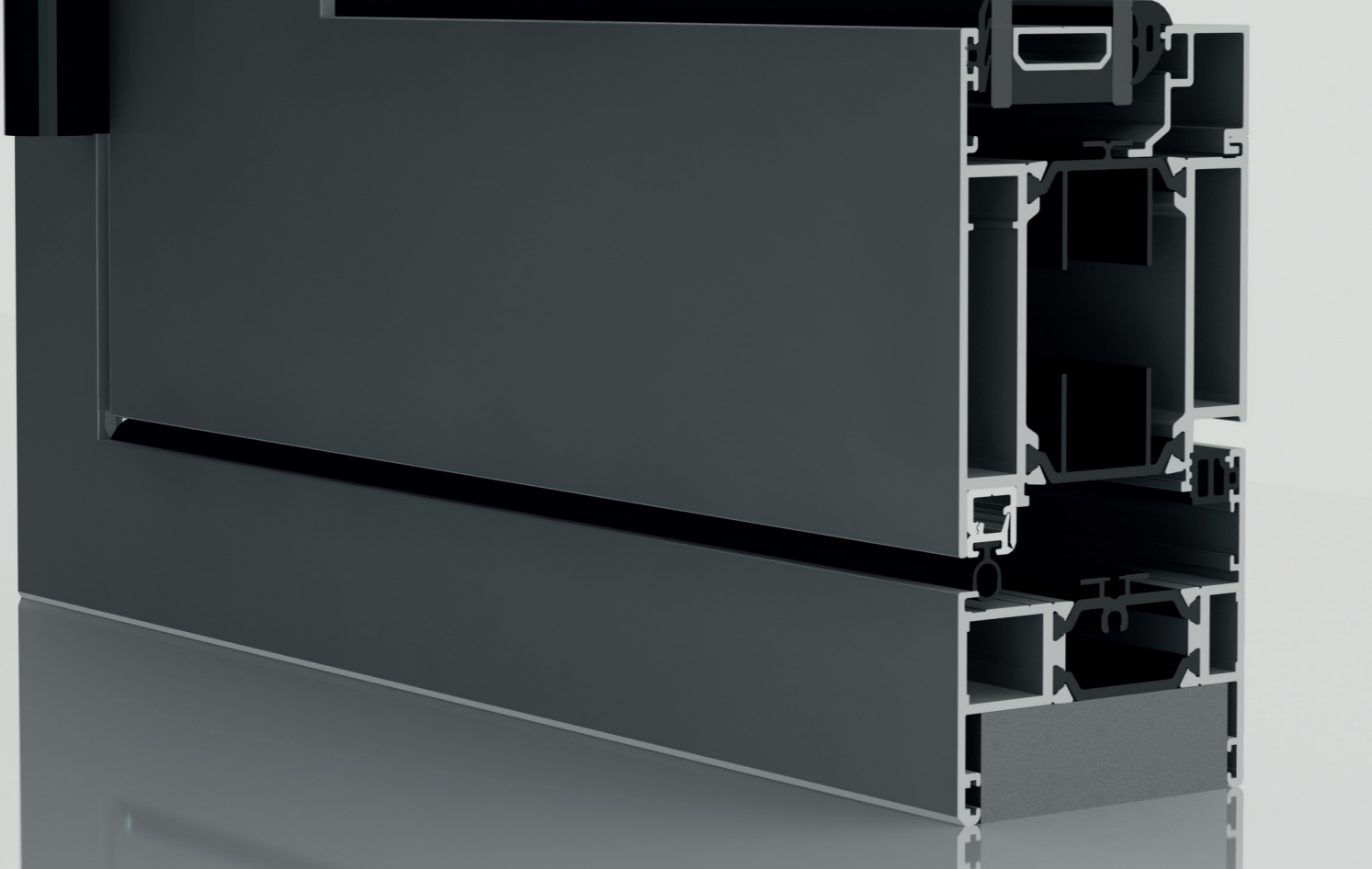
58BD SINGLE & DOUBLE DOOR	
<b>PERFORMANCE &amp; ACCREDITATION</b>	
U-value (Double Glazing)*	1.7 W/m <sup>2</sup> K
U-value (Triple Glazing)**	1.4 W/m <sup>2</sup> K
Green Guide Rating	A
Acoustic Performance (dB)	npd
Air Tightness (Pa)	Class 4
Water Tightness (Pa)	Class 7a
Wind Load (Pa)	Class E2400
Security	Q-Marked PAS 24
Secured By Design	Yes
<b>CONFIGURATIONS</b>	
Opening	Open In & Open Out
<b>SIZE LIMITS</b>	
Max Vent Weight	90 Kg
<b>SYSTEM FEATURES</b>	
Frame Options	58mm & 70mm
Dual Colour Option	●
Multi-Point Locking	●
Glazing Options	Internal
Glazing Thickness	58mm & 70mm

### CAD cross sections and thermal profile



\* Further details regarding profile Uf figures are available on request from AluK. \*\* Uf-Values based on 0.7 W/m<sup>2</sup>K triple glazing with warm edge Swisspacer V bar. Sound insulation values are Rw reduction values and are based on tests using acoustic glazing.

Please visit [www.aluk.co.uk](http://www.aluk.co.uk) to download all BIM components and CAD files.



## ➤ 58BD+ DOOR SYSTEM

The next generation in our residential door range combines very clean lines with superior protection from the elements. This three chamber system has been designed to offer the highest levels of performance, with a maximum vent weight of 150kg and improved glazing thickness. With a choice of configurations and options to fit your project, the 58BD+ system's door sash is flush with the internal and external outer frame surfaces.

This system is PAS 24 tested and includes high security multipoint-locking systems and a range of door furniture.



### Design Features

- Slim sightlines of 109mm
- Green Guide Rating A
- Max leaf weight of 150kg
- The door sash is flush with the internal and external outer frame surfaces
- Fully tested to PAS 24
- 58mm - 70mm frame depth matching other AluK door and window systems
- Glazing widths of 24mm – 40mm

### Options

- Available in single and dual colour
- Feature, ovolo or square frame options
- Choice of square or chamfered bead

### Configurations

- Open In Single Door
- Open Out Single Door
- Open In Double Door
- Open Out Double Door

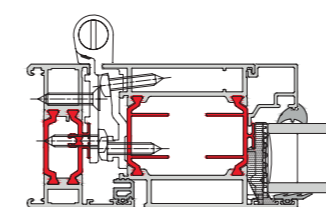
## 58BD+ Door System Technical Specifications

The 58BD+ door system a high performance solution ideal for your residential projects, the 58BD+ door system is available in single and double door options and in a full range of colours and finishes.

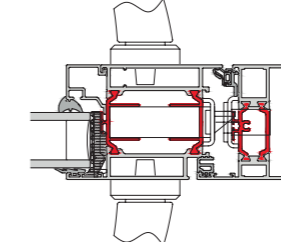
58BW+ SINGLE & DOUBLE DOOR	
<b>TECHNICAL PERFORMANCE:</b>	
U-Value (Double Glazing)*	1.6 w/m²K
U-Value (Triple Glazing)**	1.4 w/m²K
Green Guide Rating	A
Air Tightness (Pa)	(Class 2) 300 Pa
Water Tightness (Pa)	(Class A3) 600 Pa
Wind Load (Pa)	(Class A3) 1200 Pa
Security	PAS 24
<b>CONFIGURATIONS</b>	
Opening	Open In & Open Out
<b>SIZE LIMITS</b>	
Max Vent Weight	150 Kg
<b>SYSTEM FEATURES</b>	
Frame Options	58mm & 70mm
Dual Colour Option	Yes
Multi-Point Locking	Yes
Glazing Options	Internal
Glazing Thickness	24mm & 44mm

## CAD cross sections and thermal profile

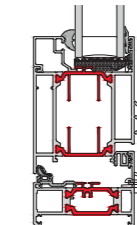
Jam B



Locking Stile



Threshold



\* Further details regarding profile Uf figures are available on request from AluK. \*\* Uf-Values based on 0.7 W/m²K triple glazing with warm edge Swisspacer V bar. Sound insulation values are Rw reduction values and are based on tests using acoustic glazing.

Please visit [www.aluk.co.uk](http://www.aluk.co.uk) to download all BIM components and CAD files.



## ➤ GT55 TB THERMALLY BROKEN DOOR SYSTEM

The GT55 TB commercial door system provides the ultimate combination of security and performance. It also includes thermal break profiles for improved performance. It is ideal for a range of heavy duty commercial and public sector applications including offices, hospitals, schools, warehousing and other industrial applications.

### Design Features

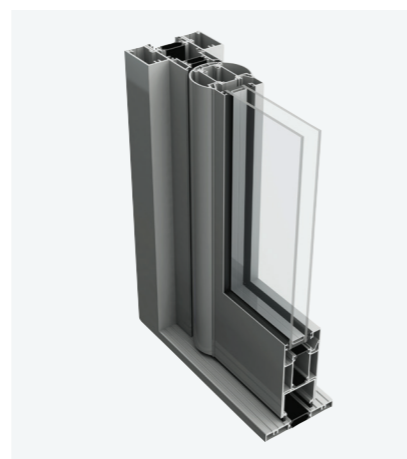
- Successfully tested to PAS24 with standard, entry control and panic hardware
- Thermal break technology for enhanced thermal performance
- Unique security and safety features
- Structurally enhanced door framing
- Fully glazed, commercial swing door
- Low Threshold
- Tested to PAS 24 and certified under the Secured by Design scheme

### Options

- Available with a full range of security and customisable hardware
- Electronic and manual access systems are easily integrated
- Available in single or dual colour option, polyester powder coating and anodised finishes
- Anti-finger trap stiles option
- DDA compliant overhead closer option

### Configurations

- Single Doors (Open In)
- Single Doors (Open Out)
- Double Doors (Open In)
- Double Doors (Open Out)



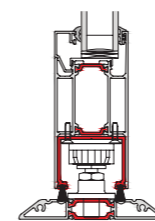
## GT55 TB Thermally Broken Door System Technical Specifications

Providing high levels of thermal performance, the GT55 TB aluminium ground floor treatment system has been designed in a ladder GT55 TB is one of the most robust thermally broken commercial door systems available on the market. The system has been fully tested and can be integrated with our GT55 ground floor treatment system. This robust and low maintenance door provides complete flexibility in entrance solutions and is available in a wide range of colours and finishes to suit any project.

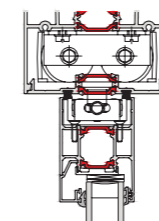
GT55 TB SINGLE & DOUBLE DOOR	
<b>PERFORMANCE &amp; ACCREDITATION</b>	
U-value (Double Glazing)*	1.8 w/m²K
U-value (Triple Glazing)**	1.6 w/m²K
Security	PAS24
Secured By Design	Yes
<b>CONFIGURATIONS</b>	
Opening	Open In / Open Out
<b>SIZE LIMITS</b>	
Max Leaf Weight	80 Kg
Panic Exit Device	Yes
<b>SYSTEM FEATURES</b>	
Frame Options	110mm
Single Point Locking	●
Multi-Point Locking	●
Electro Mechanical Locking	●
Glazing Options	Internal
Glazing Thickness	24mm - 40mm

## CAD cross sections and thermal profile

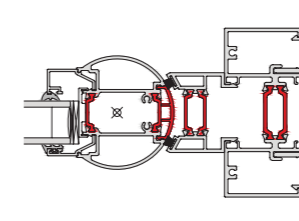
Threshold



Head



AFT Stile



\* Further details regarding profile Uf figures are available on request from Aluk. \*\* Uf-Values based on 0.7 W/m²K triple glazing with warm edge Swisspacer V bar. Sound insulation values are Rw reduction values and are based on tests using acoustic glazing.

Please visit [www.aluk.co.uk](http://www.aluk.co.uk) to download all BIM components and CAD files.



## GT55 NI NON-INSULATED DOOR SYSTEM

The GT55 NI commercial door system provides the ultimate in security, tested to LPS 1175 (SR2) and by Secured by Design at a competitive price point. It does not incorporate insulation and thus is ideal for a range of high traffic applications in the commercial and public sector including retail outlets, offices, hospitals, schools, warehousing as well as other industrial applications.

### Design Features

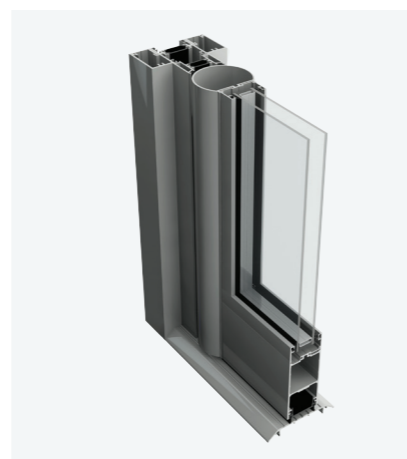
- Fully glazed, commercial swing door
- Unique security and safety features
- Structurally enhanced door framing
- Integrated with GT55 ground floor treatment system

### Options

- Available with a full range of security and customisable hardware
- Electronic and manual access systems easily integrated
- Available with single colour, polyester powder coating and anodised finishes
- SBD LP51175 & PAS 24 compliant

### Configurations

- Single Doors (Open In)
- Single Doors (Open Out)
- Double Doors (Open In)
- Double Doors (Open Out)

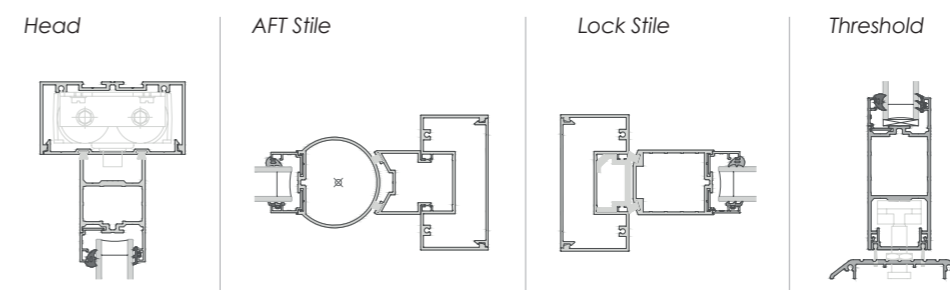


## GT55 NI non-insulated Door System Technical Specifications

Available in standard, PAS 24 and LPS1175 (SR2) options, the GT55 NI aluminium door system is one of the most secure swing doors available on the market. The system has been fully tested with full glazing, no use of steel reinforced panels, as well as with semi-glazing and can be integrated with our ground floor treatment systems. It suited to high traffic environments where no insulation is required.

GT55 NI SINGLE & DOUBLE DOOR	
<b>PERFORMANCE &amp; ACCREDITATION</b>	
U-value (Double Glazing)*	3.1 W/m²K
Security	LPS1175 SR2
<b>CONFIGURATIONS</b>	
Opening	Open Out / Open In
Single Door	•
Double Door	•
Sliding Door	•
<b>SIZE LIMITS</b>	
Max Vent Weight	80 Kg
Maximum Dimensions	
<b>SYSTEM FEATURES</b>	
Frame Options	110mm
Single Point Locking	•
Electro Mechanical Locking	•
Glazing Options	Internal
Glazing Thickness	24mm - 28mm

## CAD cross sections and thermal profile



\* Further details regarding profile Uf figures are available on request from AluK. \*\* Uf-Values based on 0.7 W/m²K triple glazing with warm edge Swisspacer V bar. Sound insulation values are Rw reduction values and are based on tests using acoustic glazing.

Please visit [www.aluk.co.uk](http://www.aluk.co.uk) to download all BIM components and CAD files.





AluK Head Office  
Imperial Park  
Celtic Way  
Newport NP10 8BE

T: 01633 81 04 40  
sales@aluk.co.uk

AluK Design Studio  
5-11 Worship Street  
London  
EC2A 2AB

info@alukdesignstudio.co.uk

[aluk.co.uk](http://aluk.co.uk)

Registered Office: AluK (GB) Limited, Imperial Park, Celtic Way, Newport, NP10 8BE  
Registered Number: 02881320

**ALUK**<sup>®</sup>